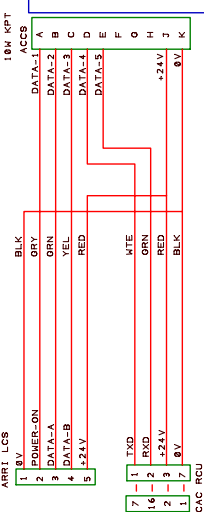


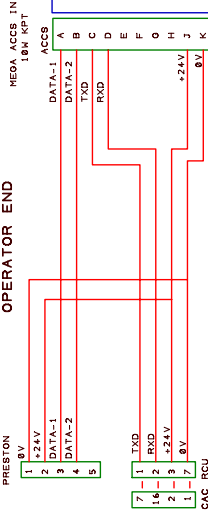
# ARRI

HAND CONTROL  
ARRI LCS



# PRESTON

HAND CONTROL  
PRESTON



## BASEPLATE CONNECTIONS



RCU CONNECTORS - CAMERA END,  
S 184 A 866-138+ (COLLET, E3 184.3/7.7+B)  
RCU CONNECTORS - OPERATOR EXTN CABLE,  
K 184 A 866-138+ (COLLET, E3 184.4/7.7+C)  
18µ SLIPRING STRAIN RELIEF COLLET  
PPM 2B 138 LC  
18µ SLIPRING STRAIN RELIEF - BLACK  
OMA 2B 857 RN

**PROJECTION:**

**TOLERANCES:**  
DIMENSIONS ARE TO +/- 0.1mm UNLESS STATED OTHERWISE.  
PLATING TOLERANCE TO BE AS PER STANDARD.  
REMOVE BURRS/SHARP EDGES.

**SPECIFICATION:**  
MATERIAL: 6082 (HE 30)  
FINISH: HARD BLACK ANODISE  
DYNAMIC MOUNTS INT'L.  
MOUNTING SURFACE  
MILLIMETRES UNLESS STATED

SCALE: N/A  
MISC/AMENDMENTS:  
PROJECT : MEGA III

PRINT: 1  
DRAWING : ACCS-WIRE  
DRAWN : DAN O'LLIHAM  
DATE : 9 MARCH 2001

**DYNAMIC MOUNTS INTERNATIONAL**  
TITLE:  
**ACCS WIRING**

## MEGA III POWER CABLE

MEGA III CONNECTOR	24-28VDC	BNW - A
620B-567014-025N	8V	BLU - B
RS 241-1216		

## MEGA III UMBILICAL CABLE

CONTROLLER	19µ KPT	HEAD
RS 381-4478	6µ KPT	RS 381-4449
FUNCTION	COLOUR	PAIR
A -24-28VDC	ORG	1 A
B 8V	MTE	1 B
C DATA-	MTE	2 N
D DATA+	BLU	2 P

## ARRI GREY POWER CABLE

MEGA III	28°	CAMERA
F00 2B 384 CLAD XX	24V	91652887-138+
1.2	8V	2
3.4	BLU	1

## CAMERA CABLES

### PANAVISION POWER CABLE

MEGA III	28°	CAMERA
F00 2B 384 CLAD XX	24V	FFA9393CLAG92
1.2	8V	1
3.4	BLU	2

### PANAVISION XL POWER CABLE

MEGA III	28°	CAMERA
F00 2B 384 CLAD XX	24V	FFA18932CLAG62
1.2	8V	1
3.4	BLU	2

### AATON POWER CABLE

MEGA III	28°	CAMERA
F00 2B 384 CLAD XX	24V	FFA 89 CLACXX
1.2	8V	1
3.4	BLU	2

### ARRI MOVIECAM POWER CABLE

MEGA III	28°	CAMERA
F00 2B 384 CLAD XX	24V	4XLR-CA-F
1.2	8V	2
3.4	BLU	1

## MAIN CABLES

MEGA III CONNECTOR	24-28VDC	BNW - A
620B-567014-025N	8V	BLU - B
RS 241-1216		

## MEGA III UMBILICAL CABLE

CONTROLLER	19µ KPT	HEAD
RS 381-4478	6µ KPT	RS 381-4449
FUNCTION	COLOUR	PAIR
A -24-28VDC	ORG	1 A
B 8V	MTE	1 B
C DATA-	MTE	2 N
D DATA+	BLU	2 P

## ARRI GREY POWER CABLE

MEGA III	28°	CAMERA
F00 2B 384 CLAD XX	24V	91652887-138+
1.2	8V	2
3.4	BLU	1

## CAMERA CABLES

### PANAVISION POWER CABLE

MEGA III	28°	CAMERA
F00 2B 384 CLAD XX	24V	FFA9393CLAG92
1.2	8V	1
3.4	BLU	2

### PANAVISION XL POWER CABLE

MEGA III	28°	CAMERA
F00 2B 384 CLAD XX	24V	FFA18932CLAG62
1.2	8V	1
3.4	BLU	2

### AATON POWER CABLE

MEGA III	28°	CAMERA
F00 2B 384 CLAD XX	24V	FFA 89 CLACXX
1.2	8V	1
3.4	BLU	2

### ARRI MOVIECAM POWER CABLE

MEGA III	28°	CAMERA
F00 2B 384 CLAD XX	24V	4XLR-CA-F
1.2	8V	2
3.4	BLU	1

ROLL CABLE BAR (BASEPLATE UNDER)

- 90 CLAMP
- 90 CLAMP
- 90 CLAMP
- 90 CLAMP
- 90 CLAMP

PAN PCB

ARR1 18 RISER

ARR15S RISER

PANM5SION RISER

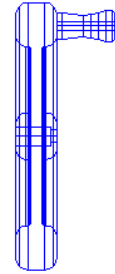
WEIGHT HANGER

AMP MODULE (CONNECTOR DOWN)

ROLL S/R

ROLL S/R

WEIGHTS (+165mm BAR)



WEIGHTS (+165mm BAR)

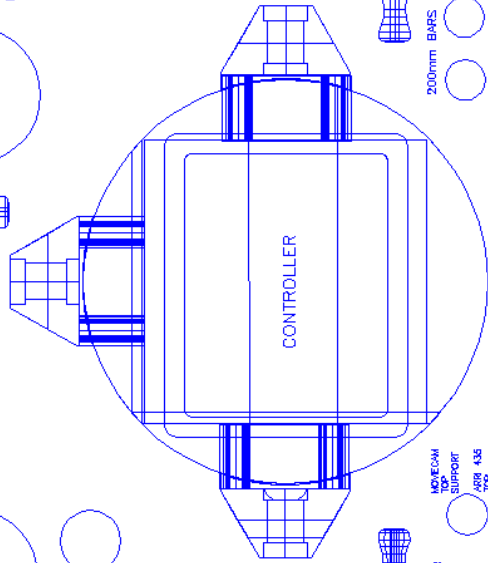
Extreme  
SPELLE

LONG TOP SUPPORT

LONG TOP SUPPORT

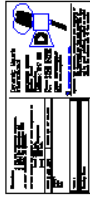
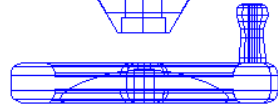
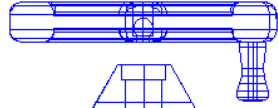
SHORT TOP SUPPORT

SHORT TOP SUPPORT



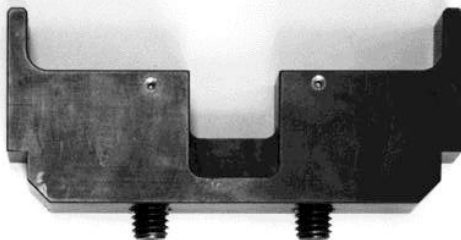
TOP JOINER  
TOP SUPPORT  
TOP SUPPORT  
TOP SUPPORT

200mm BARS

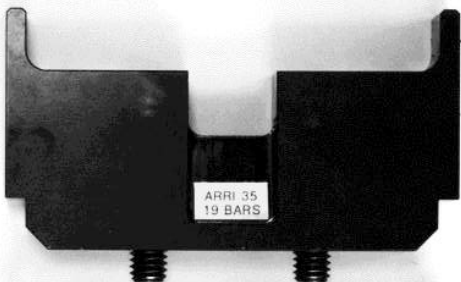


BARs: 365mm AT BOTTOM, 2x470mm IN MIDDLE, & 2x710mm AT TOP

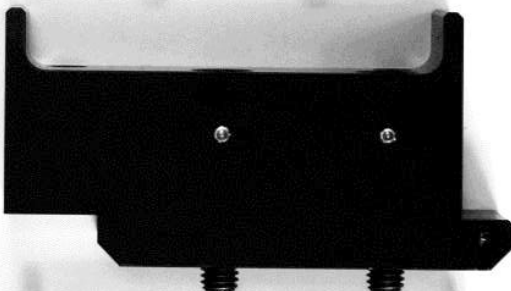
ARRI 16mm  
19mm BARS



ARRI 35mm  
19mm BARS



ARRI 35mm  
15mm BARS



PANAVISION



